

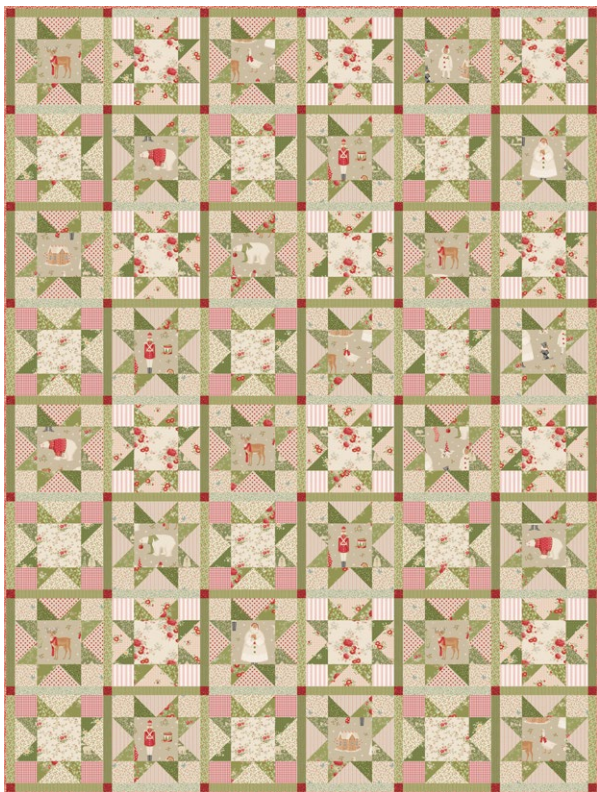
Preliminary fabric consumption, please do not kit quilts based on this list.
We control the measurements as we sew, and will update accordingly.



Christmas Star Quilt (Green/Cream)

Merry Little Christmas Collection

Here's a gorgeous but easy quilt for you to make to decorate your home at Christmas. The design is a simple eight-point star block, given a little extra emphasis with narrow sashing and contrasting petrol cornerstones. For this version of the quilt, we've used a red and duck egg blue colour scheme, using fabrics from the Merry Little Christmas fabric collection and its blenders, with a few fabrics from the Creating Memories collection, plus a Woven Tea Towel Basic in a fresh red and white stripe.



Materials

- Fabric 1: $\frac{3}{8}$ yd (40cm) – Holly moss (100631)
- Fabric 2: $\frac{3}{4}$ yd (75cm) – Carol moss (100632)
- Fabric 3: $\frac{3}{8}$ yd (40cm) – Mistletoe pistachio (100633)
- Fabric 4: $\frac{3}{8}$ yd (40cm) – Joy pine (100634)
- Fabric 5: $\frac{3}{4}$ yd (75cm) – Paper Scenes artichoke (100635)
- Fabric 6: $\frac{3}{4}$ yd (75cm) – Holly clay (100636)
- Fabric 7: $\frac{3}{8}$ yd (40cm) – Carol cream (100637)
- Fabric 8: $\frac{3}{4}$ yd (75cm) – Joy cream (100638)
- Fabric 9: $\frac{3}{4}$ yd (75cm) – Mistletoe cream (100639)
- Fabric 10: 1yd (1m) – Winter Friends clay (100640) *
- Fabric 11: $\frac{1}{8}$ yd (15cm) or fat eighth – Eve burgundy (110140) **
- Fabric 12: $\frac{3}{8}$ yd (40cm) – Eve pine (110144)
- Fabric 13: $\frac{3}{8}$ yd (40cm) – Noel moss (110145)
- Fabric 14: $\frac{3}{8}$ yd (40cm) – Eve sage (110146)
- Fabric 15: $\frac{3}{8}$ yd (40cm) – Noel cream (110147)
- Fabric 16: $\frac{3}{8}$ yd (40cm) – Chambray pine (160033)
- Fabric 17: $\frac{3}{8}$ yd (40cm) – Stripe green (160082)
- Fabric 18: $\frac{3}{4}$ yd (75cm) – Polka Dot red (160085)
- Fabric 19: $\frac{3}{8}$ yd (40cm) – Gingham red (160087)
- Fabric 20: $\frac{3}{4}$ yd (75cm) – Seam Stripe red (160083)
- Fabric 21: $\frac{3}{8}$ yd (40cm) – Apple Cake Stripe red (160112)
- Wadding (batting): 75in x 97in (190.5cm x 246.5cm)
- Backing fabric: $5\frac{1}{2}$ yds (5m) – Shortcake Stripe red (160111)
- Binding fabric: $\frac{5}{8}$ yd (60cm) – Eve red (110138)

Fabric Note

* Fabric 10 (Winter Friends) has lots of charming motifs, so it's nice to fussy cut the squares needed for this. Extra fabric has been allowed in the Materials list. If you don't want to fussy cut, then only $\frac{3}{4}$ yd (75cm) will be needed.

** Fabric 11 (Eve petrol) needs a minimum depth of $4\frac{1}{2}$ in (12cm), so make sure your fabric piece hasn't been cut wonky. If in doubt, buy $\frac{1}{4}$ yd (25cm).

Finished Size

$67\frac{1}{2}$ in x $89\frac{1}{2}$ in (171.5cm x 227.5cm)

Tilda®
FABRICS

Thank you for using our free Tilda patterns. We provide free patterns in order to market, and sell Tilda fabrics. You are welcome to kit and sell our projects provided the kit only contain Tilda fabrics and refer to tildasworld.com/free-patterns for the explanation. Rare typing errors may occur, in this case please send us a message using the contact form form at <https://tildafabrics.com/contact-prelogin/>