

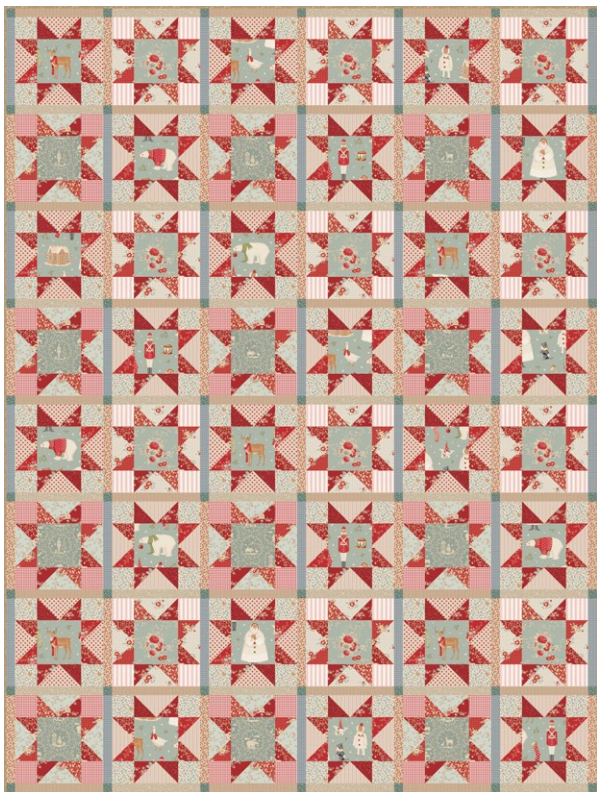
Preliminary fabric consumption, please do not kit quilts based on this list.  
We control the measurements as we sew, and will update accordingly.



## Christmas Star Quilt (Red/Duck egg)

Merry Little Christmas Collection

Here's a gorgeous but easy quilt for you to make to decorate your home at Christmas. The design is a simple eight-point star block, given a little extra emphasis with narrow sashing and contrasting petrol cornerstones. For this version of the quilt, we've used a red and duck egg blue colour scheme, using fabrics from the Merry Little Christmas fabric collection and its blenders, with a few fabrics from the Creating Memories collection, plus a Woven Tea Towel Basic in a fresh red and white stripe.



### Materials

- Fabric 1:  $\frac{3}{8}$ yd (40cm) – Holly red (100621)
- Fabric 2:  $\frac{3}{4}$ yd (75cm) – Carol burgundy (100622)
- Fabric 3:  $\frac{3}{8}$ yd (40cm) – Mistletoe red (100623)
- Fabric 4:  $\frac{3}{8}$ yd (40cm) – Joy red (100624)
- Fabric 5:  $\frac{3}{4}$ yd (75cm) – Paper Scenes burgundy (100625)
- Fabric 6:  $\frac{3}{4}$ yd (75cm) – Holly duck egg (100626)
- Fabric 7:  $\frac{3}{8}$ yd (40cm) – Carol duck egg (100627)
- Fabric 8:  $\frac{3}{4}$ yd (75cm) – Joy blue (100628)
- Fabric 9:  $\frac{3}{4}$ yd (75cm) – Noel mist (110143)
- Fabric 10: 1yd (1m) – Winter Friends duck egg (100630) \*
- Fabric 11:  $\frac{1}{8}$ yd (15cm) or fat eighth – Eve petrol (110142) \*\*
- Fabric 12:  $\frac{3}{8}$ yd (40cm) – Eve burgundy (110140)
- Fabric 13:  $\frac{3}{8}$ yd (40cm) – Noel red (110139)
- Fabric 14:  $\frac{3}{8}$ yd (40cm) – Eve clay (110148)
- Fabric 15:  $\frac{3}{8}$ yd (40cm) – Paper Scenes duck egg (100629)
- Fabric 16:  $\frac{3}{8}$ yd (40cm) – Plaid stone (160079)
- Fabric 17:  $\frac{3}{8}$ yd (40cm) – Stripe toffee (160076)
- Fabric 18:  $\frac{3}{4}$ yd (75cm) – Polka Dot red (160085)
- Fabric 19:  $\frac{3}{8}$ yd (40cm) – Gingham red (160087)
- Fabric 20:  $\frac{3}{4}$ yd (75cm) – Seam Stripe red (160083)
- Fabric 21:  $\frac{3}{8}$ yd (40cm) – Apple Cake Stripe red (160112)
- Backing fabric:  $5\frac{1}{2}$ yds (5m) – Waffle Plaid red (160113)
- Binding fabric:  $\frac{3}{8}$ yd (60cm) – Noel taupe (110149)

### Finished Size

67 $\frac{1}{2}$ in x 89 $\frac{1}{2}$ in (171.5cm x 227,5cm)

### Fabric Note

\* Fabric 10 (Winter Friends) has lots of charming motifs, so it's nice to fussy cut the squares needed for this. Extra fabric has been allowed in the Materials list. If you don't want to fussy cut, then only  $\frac{3}{4}$ yd (75cm) will be needed.

\*\* Fabric 11 (Eve petrol) needs a minimum depth of 4 $\frac{1}{2}$ in (12cm), so make sure your fabric piece hasn't been cut wonky. If in doubt, buy  $\frac{1}{4}$ yd (25cm).

Tilda®  
FABRICS

Thank you for using our free Tilda patterns. We provide free patterns in order to market, and sell Tilda fabrics. You are welcome to kit and sell our projects provided the kit only contain Tilda fabrics and refer to [tildasworld.com/free-patterns](https://tildasworld.com/free-patterns) for the explanation. Rare typing errors may occur, in this case please send us a message using the contact form form at <https://tildafabrics.com/contact-prelogin/>