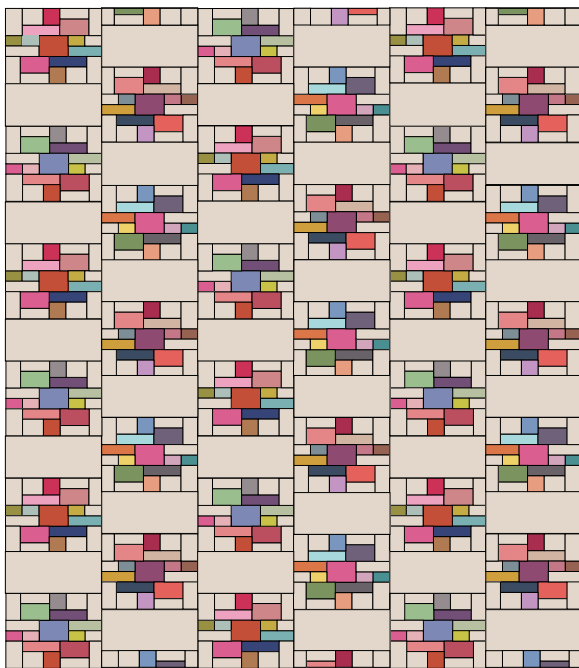




## Color Speckles Quilt

(Solids only)

This quilt is not only easy to make but is a great way to showcase a selection of lovely fabrics from our Solids range. The striking modern design is composed of four asymmetrical blocks, made in different colourways and contrasted with a warm sand background. If you like, it would be easy to change the background to another Tilda Solid of your choice. For added interest we've made a pieced backing for the quilt and instructions are given for making this if you choose this option.



Color Speckles Quilt

### Fabric Note

The Materials list gives general quantities of the fabrics needed, including sufficient for the small squares and rectangles for a pieced backing. If you want to have more specific cutting sizes, see Step 3 and Step 5.

### Materials

- Fabric 1: 4¼yd (3.9m) – Solid warm sand (120002)
- Fabric 2: 10in (25.5cm) square – Solid peacock (120045)
- Fabric 3: 10in (25.5cm) square – Solid cappuccino (120007)
- Fabric 4: 10in (25.5cm) square – Solid toffee (120004)
- Fabric 5: 10in (25.5cm) square – Solid burgundy (120006)
- Fabric 6: ¼yd (15cm) – Solid country red (120014)
- Fabric 7: 10in (25.5cm) square – Solid rosewood (120034)
- Fabric 8: 12in (30.5cm) square – Solid terracotta (120035)
- Fabric 9: 10in (25.5cm) square – Solid brown (120005)
- Fabric 10: 10in (25.5cm) square – Solid red (120021)
- Fabric 11: 10in (25.5cm) square – Solid dusty rose (120009)
- Fabric 12: 10in (25.5cm) square – Solid pink (120026)
- Fabric 13: ¼yd (25cm) – Solid cerise (120015)
- Fabric 14: ¼yd (25cm) – Solid coral (120016)
- Fabric 15: 10in (25.5cm) square – Solid mustard (120040)
- Fabric 16: 10in (25.5cm) square – Solid cantaloupe (120019)
- Fabric 17: 10in (25.5cm) square – Solid ginger (120018)
- Fabric 18: ¼yd (25cm) – Solid rust (120017)
- Fabric 19: ¼yd (25cm) or 12in (30.5cm) square if not making the pieced backing – Solid salmon (120027)
- Fabric 20: 10in (25.5cm) square – Solid pale yellow (120022)
- Fabric 21: 10in (25.5cm) square – Solid dijon (120039)
- Fabric 22: 10in (25.5cm) square – Solid lime green (120028)
- Fabric 23: 10in (25.5cm) square – Solid moss (120038)
- Fabric 24: 10in (25.5cm) square – Solid sage green (120020)
- Fabric 25: 12in (30.5cm) square – Solid pine (120041)
- Fabric 26: 12in (30.5cm) square – Solid fern green (120025)
- Fabric 27: 10in (25.5cm) square – Solid aqua (120042)
- Fabric 28: 10in (25.5cm) square – Solid dusty teal (120043)
- Fabric 29: 10in (25.5cm) square – Solid sky teal (120023)
- Fabric 30: 10in (25.5cm) square – Solid cornflower blue (120024)
- Fabric 31: 10in (25.5cm) square – Solid petrol (120037)
- Fabric 32: 10in (25.5cm) square – Solid blue sage (120008)
- Fabric 33: 10in (25.5cm) square – Solid night blue (120029)
- Fabric 34: 12in (30.5cm) square – Solid lupine (120013)
- Fabric 35: 12in (30.5cm) square – Solid aubergine (120036)
- Fabric 36: 10in (25.5cm) square – Solid lavender pink (120010)
- Fabric 37: 12in (30.5cm) square – Solid plum (120048)
- Fabric 38: 10in (25.5cm) square – Solid lilac (120030)
- Fabric 39: 10in (25.5cm) square – Solid grape (120046)
- Fabric 40: 10in (25.5cm) square – Solid rain grey (120032)
- Fabric 41: 10in (25.5cm) square – Solid dark granite (120033)
- Backing fabric if using your choice of a single fabric: 5yds (4.6m)  
OR Backing fabric if making the pieced backing described: refer to Step 5 for fabrics needed
- Binding fabric: ½yd (60cm) – Solid cappuccino (120007)

### Finished Size

69½in x 79½in (176.5cm x 202cm)