

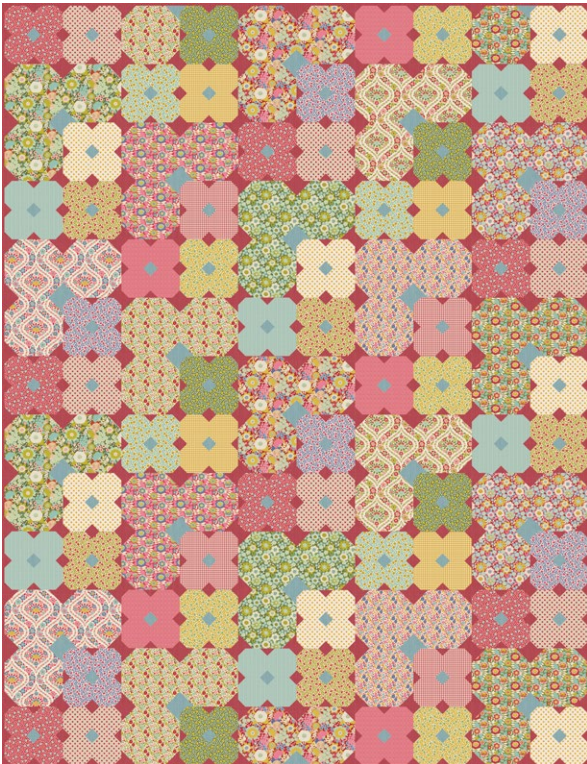
Preliminary fabric consumption, please do not kit quilts based on this list.
We control the measurements as we sew, and will update accordingly.



Wallflower Quilt (Burgundy)

Wallflower Collection

This lovely quilt will never date thanks to the simple flower design and the easy techniques. It showcases fabrics from the decorative Wallflower collection and its Bellflower blenders, plus some fabrics from the Creating Memories collection and two Chambrays. The colour scheme for this quilt is predominantly pretty greens, pinks and reds on a rich burgundy Chambray background.



Fabric Note

Where a long quarter of a yard is given in the Materials list you could use a fat quarter instead, which is assumed to be a cut of approximately 21in x 18in (53.3cm x 45.7cm).

Materials (see fabric note)

- Fabric 1: 1½yds (1.4m) – Chambray burgundy (160040)
- Fabric 2: ¾yd (75cm) – Chambray petrol (160005)
- Fabric 3: ¼yd (25cm) – Lauren green (100601)
- Fabric 4: ¼yd (25cm) – Lauren burgundy (100602)
- Fabric 5: ¼yd (25cm) – Wallflower green (100605)
- Fabric 6: ¾yd (40cm) – Wallflower burgundy (100606)
- Fabric 7: ¾yd (40cm) – Beverly green (100609)
- Fabric 8: ¼yd (25cm) – Beverly pink (100610)
- Fabric 9: ¾yd (40cm) – Janice green (100613)
- Fabric 10: ¼yd (25cm) – Janice red (100614)
- Fabric 11: ¼yd (25cm) – Bianca green (100617)
- Fabric 12: ¼yd (25cm) – Bianca red (100618)
- Fabric 13: ¼yd (25cm) – Bellflower teal (110126)
- Fabric 14: ¼yd (25cm) – Bellflower pine (110127)
- Fabric 15: ¼yd (25cm) – Bellflower green (110128)
- Fabric 16: ¾yd (40cm) – Bellflower pink (110129)
- Fabric 17: ¼yd (25cm) – Bellflower flaxen (110130)
- Fabric 18: ¼yd (25cm) – Bellflower denim (110131)
- Fabric 19: ¼yd (25cm) – Seamstripe teal (160060)
- Fabric 20: ¾yd (40cm) – Polka Dot yellow (160064)
- Fabric 21: ¼yd (25cm) – Gingham yellow (160065)
- Fabric 22: ¼yd (25cm) – Tiny Dot red (160081)
- Fabric 23: ¾yd (40cm) – Polka Dot red (160085)
- Fabric 24: ¼yd (25cm) – Gingham red (160087)
- Wadding (batting): 68in x 86in (173cm x 218.5cm)
- Backing fabric: 4¾yds (4.4m) – Bianca green (100617)
- Binding fabric: ¾yd (60cm) – Chambray burgundy (160040)

Finished Size

60½in x 78½in (153.7cm x 199.5cm)