

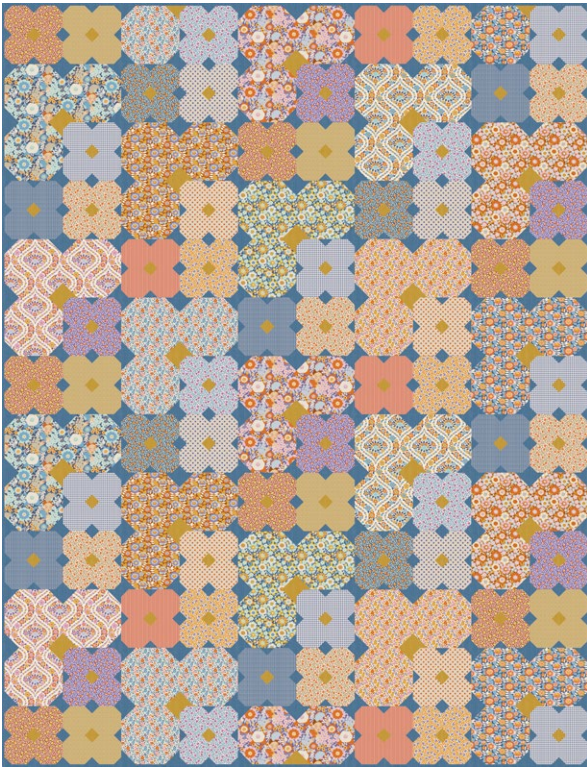
Preliminary fabric consumption, please do not kit quilts based on this list.
We control the measurements as we sew, and will update accordingly.



Wallflower Quilt (Prussian)

Wallflower Collection

The simple flower design used in this quilt makes this an appealing project for any time of the year. The colour scheme for the quilt is soothing blues, thistles and caramels on a wonderful Prussian blue background. The stars of the show are fabrics from the attractive Wallflower collection and its Bellflower blenders. There are also some fabrics from the Creating Memories collection and two Chambrays.



Fabric Note

Where a long quarter of a yard is given in the Materials list you could use a fat quarter instead, which is assumed to be a cut of approximately 21in x 18in (53.3cm x 45.7cm).

Materials (see fabric note)

- Fabric 1: 1½yds (1.4m) – Chambray prussian (160031)
- Fabric 2: ¾yd (75cm) – Chambray mustard (160042)
- Fabric 3: ¼yd (25cm) – Lauren blue (100603)
- Fabric 4: ¼yd (25cm) – Lauren caramel (100604)
- Fabric 5: ¼yd (25cm) – Wallflower blue (100607)
- Fabric 6: ⅜yd (40cm) – Wallflower thistle (100608)
- Fabric 7: ⅜yd (40cm) – Beverly blue (100611)
- Fabric 8: ¼yd (25cm) – Beverly caramel (100612)
- Fabric 9: ⅜yd (40cm) – Janice blue (100615)
- Fabric 10: ¼yd (25cm) – Janice caramel (100616)
- Fabric 11: ¼yd (25cm) – Bianca blue (100619)
- Fabric 12: ¼yd (25cm) – Bianca thistle (100620)
- Fabric 13: ¼yd (25cm) – Bellflower prussian (110133)
- Fabric 14: ¼yd (25cm) – Bellflower blue (110132)
- Fabric 15: ¼yd (25cm) – Bellflower sand (110134)
- Fabric 16: ⅜yd (40cm) – Bellflower mulberry (110135)
- Fabric 17: ¼yd (25cm) – Bellflower mustard (110136)
- Fabric 18: ¼yd (25cm) – Bellflower thistle (110137)
- Fabric 19: ¼yd (25cm) – Tiny Stripe blue (160070)
- Fabric 20: ⅜yd (40cm) – Gingham blue (160073)
- Fabric 21: ¼yd (25cm) – Polka Dot blue (160071)
- Fabric 22: ¼yd (25cm) – Seamstripe ginger (160074)
- Fabric 23: ⅜yd (40cm) – Tiny Dot khaki (160075)
- Fabric 24: ¼yd (25cm) – Polka Dot ginger (160078)
- Wadding (batting): 68in x 86in (173cm x 218.5cm)
- Backing fabric: 4¾yds (4.4m) – Bianca blue (100619)
- Binding fabric: ⅝yd (60cm) – Chambray prussian (160031)

Finished Size

60½in x 78½in (153.7cm x 199.5cm)