

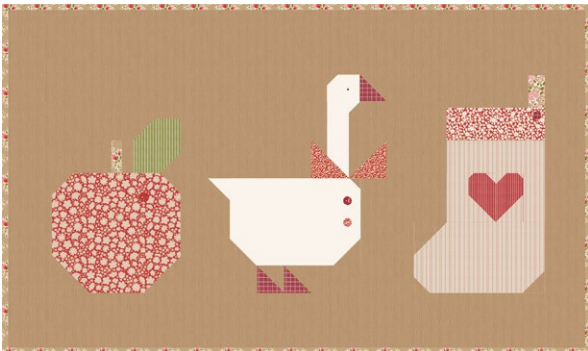
Preliminary fabric consumption, please do not kit quilts based on this list.
We control the measurements as we sew, and will update accordingly.



Winter Pillows

Creating Memories Winter Collection

Two pillows have been designed to be perfect companions to the Christmas Calendar Quilt. Each pillow features three of the festive motifs from the quilt. This pillow has a red Chambray background and there is a second pillow with a brown background (see tildasworld.com for the brown pillow and also the quilt instructions). Tilda buttons have been used as a decorative and functional feature on the pillow and can be used to hang little surprise gifts.



Fabric Note

For some of the fabrics only a single piece is required, so the exact cutting size is given in the Materials list.

Materials Brown

- Fabric 1: ½yd (50cm) – Chambray brown (160035) (background)
- Fabric 2: about 9in (23cm) square – Solid dove white (120001)
- Fabric 3: 5in x 2in (12.7cm x 5.1cm) – Avery red (130144)
- Fabric 4: 1¼in x 2in (3.2cm x 5.1cm) – Harper pink (130146)
- Fabric 5: 1in x 2in (2.5cm x 5.1cm) – Lulu sand (130148)
- Fabric 6: about 5in (13cm) square – Brie red (130149)
- Fabric 7: 6½in x 6in (16.5cm x 15.2cm) – Carla red (130152)
- Fabric 8: 2¾in x 3in (7cm x 7.6cm) – Stripe green (160082)
- Fabric 9: about 12in (30.5cm) square – Seamstripe red (160083)
- Fabric 10: about 5in (13cm) square – Tiny Stripe red (160084)
- Fabric 11: about 5in (13cm) square – Plaid burgundy (160086)
- Fabric for back of pillow: ⅔yd (60cm) – Lulu sand (130148)
- Binding fabric: ¼yd (25cm) – Lulu sand (130148)
- Pack of Creating Memories Buttons in Christmas Reds and Greens 10mm and 12mm (400065)

Materials Red

- Fabric 1: ½yd (50cm) – Chambray red (160001) (background)
- Fabric 2: about 9in (23cm) square – Solid dove white (120001)
- Fabric 3: 4in x 2¼in (10.2cm x 5.7cm) – Evie green (130145)
- Fabric 4: about 6in (15cm) square – Berrytangle burgundy (130147)
- Fabric 5: 1in x 2¾in (2.5cm x 7cm) – Lulu sand (130148)
- Fabric 6: about 9in (23cm) square – Frida red (130150)
- Fabric 7: 7½in x 4in (19cm x 10.2cm) – Gracie green (130151)
- Fabric 8: 2½in x 5in (6.4cm x 12.7cm) – Tiny Dot red (160081)
- Fabric 9: 5½in x 3in (14cm x 7.6cm) – Stripe green (160082)
- Fabric 10: 1½in (3.8cm) square – Seamstripe red (160083)
- Fabric 11: about 12in (30cm) square – Polka Dot red (160085)
- Fabric 12: about 6in (15cm) square – Gingham red (160087)
- Fabric for back of pillow: ⅔yd (60cm) – Plaid burgundy (160086)
- Binding fabric: ¼yd (25cm) – Plaid burgundy (160086)
- Pack of Creating Memories Buttons in Christmas Reds and Greens 10mm and 12mm (400065)

Finished Size

27¼in x 15½in (69.2cm x 39.4cm)